



# SPECIFICATION SHEET

|             |       |      |       |
|-------------|-------|------|-------|
| Model #:    | _____ | Qty: | _____ |
| Project #:  | _____ |      |       |
| Consultant: | _____ |      |       |

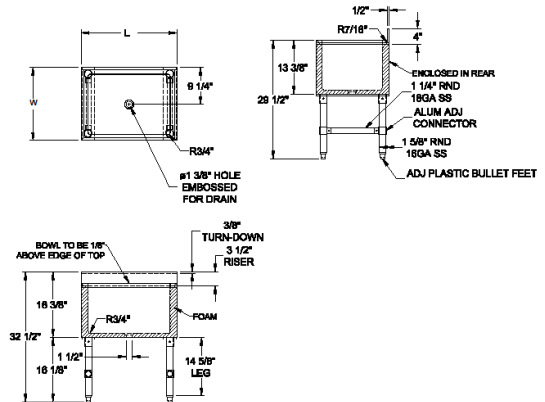
QUALITY FOOD SERVICE EQUIPMENT

## ICE BIN & COCKTAIL UNIT



## DIMENSIONS

underbar - with bowl



## MATERIAL

- ◆ 18GA 300 stainless steel fabricated
- ◆ Stainless steel legs & side bracing
- ◆ Plastic bullet feet

## FEATURES

- ◆ 12-9/16" ice bin height
- ◆ Deep insulated ice bin
- ◆ 4"H backsplash
- ◆ Includes 2 piece sliding lid
- ◆ Includes drain
- ◆ Side bracing for reinforced support
- ◆ Adjustable bullet feet

| Model#  | Length | Width   |
|---------|--------|---------|
| IB-2418 | 24"    | 18-1/4" |
| IB-2421 | 24"    | 21-1/4" |
| IB-3018 | 30"    | 18-1/4" |
| IB-3021 | 30"    | 21-1/4" |
| IB-3618 | 36"    | 18-1/4" |
| IB-3621 | 36"    | 21-1/4" |
| IB-4818 | 48"    | 18-1/4" |
| IB-4821 | 48"    | 21-1/4" |

(609) 642-8389 | sales@nbreqquipment.com | www.nbreqquipment.com